

Build smarter flows with the right accessories

Accessory guide for workbenches



WFI

Why accessory guide?

We want to make it easier for others to work smarter. Therefore, we have produced an overview of our accessories for workbenches, so that you can create smarter flows. There are opportunities to build both under and over the table – and we are sure that we have solutions that can streamline your business. Try it out!



WFI

Follow the guide like this!

The guide takes you through our range of accessories for workbenches, from table tops to what can be mounted over and under the table. Finally, we list various options for storage and ergonomic functions to complement the workstation with.

Table tops

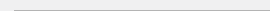


Which table top for which work?

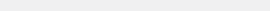
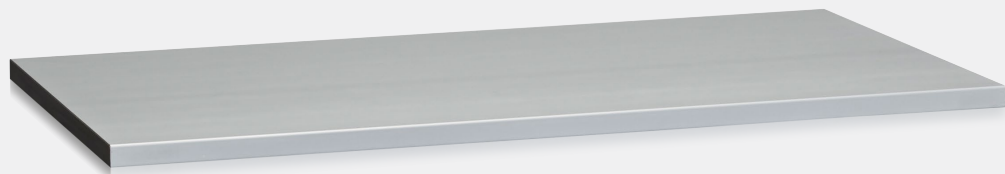
Different table tops are suitable for different types of tasks.



A laminate worktop is well suited for simple assembly and workshop tasks. It has a hard and scratch resistant surface with good resistance to liquids and chemicals. Easy to wipe off and keep clean. Edge strip in grey ABS.



A vinyl worktop is well suited for packing and assembly work. It has a soft surface that reduces the risk of damage to the product being handled. Edge strip in grey ABS.



A steel worktop is well suited for heavier assembly and workshop tasks, sharpening, and welding. Used with advantage when high demands are placed on durability. A robust board with a scratch resistant surface that is easy to wipe off. Aluzinc-treated steel sheet and edging on short sides in grey ABS.



Which table top for which work?

Different table tops are suitable for different types of tasks.



Worktop in oil-hardened board. Suitable for simple assembly and workshop tasks. Has an insensitive surface that can withstand oil and is gentle on materials. Edge strip in grey ABS.



Worktop in oak parquet. Suitable for simple assembly and workshop tasks. Durable board with hard surface that is gentle on materials. Aluminum profile in front edge and edging in grey ABS on short sides.



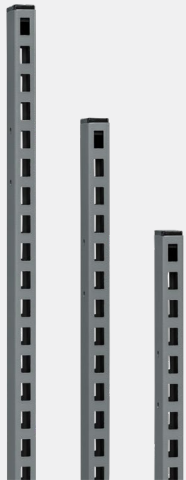
Worktop in polyethylene. UV and scratch resistant with a hard surface that is gentle on materials and dirt repellent. Approved for contact with food. The board is cold resistant, can be used in humid environments, and is resistant to several chemicals.

Over the table



Suspension and superstructure

Build your own complete system with accessories for suspension and superstructure.



3-310-136

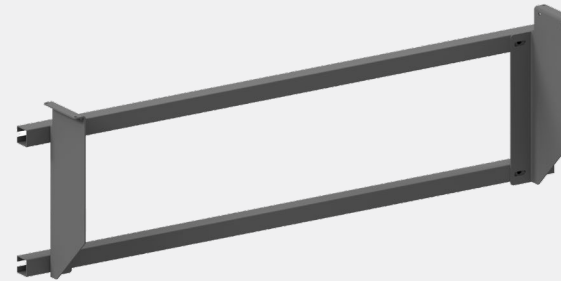
Perforated uprights 1000 mm.

Mounted on other parts of the system. The upright is attached to the body frame with the fixing kit. Also available in lengths 1448 and 1928 mm.



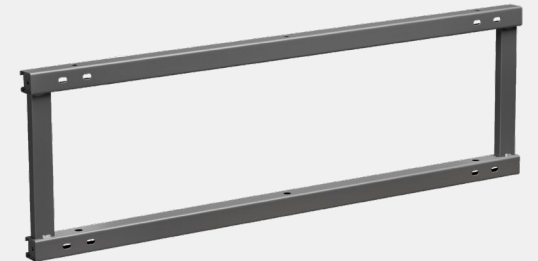
3-602-136

Superstructure kit with c-rail 670 + 670 mm. The package includes a pair of fixed arms, lighting ramp, and c-rail. Also available in sizes 670 + 900 and 900 + 900 mm.



1-507-136

Frame for uprights 1200 mm. Used to mount uprights for superstructure. Fits our IDC tables. Consists of 2 c-rails and 2 sheet metal brackets. Also available in lengths 1600 and 2000 mm.



1-114-36

Frame for uprights 1520 mm. Used for stabilization and as a bracket for uprights, suitable for workbenches HD and LD, as well as motorized workbenches. Also available in lengths 1120, 1920 and 2420 mm.



Lighting

Good lighting is an important part of the work environment, both to make it easy to perform tasks and pleasant to work at.



3-674-0

Workplace Lighting Gaspra LED Module 1200 mm.

Lighting series for assembly workstations with LED (opal shade), chassis in aluminium. Long lifetime of at least 50,000 hours (LED). Supplied with a black cable (3 m) with plug and bracket for c-rail. LEDs provide an even illumination. Light color: 4000k. Luminaire: 3400lm. Effect: 38W. Color: Aluminium. Weight: 2,5 kg.

3-561-1358

Frosted acrylic for lighting ramp 670 + 670 mm. Fits with superstructure kit c-rail 670 + 670 mm and lighting kit LED 670. Available in 5 different dimensions.

3-560-670

Lighting Kit LED 670. Includes energy efficient LED-lights with accessories for one 670-section. If you build more sections, add more kits. The strip can be installed on the lighting ramp or under shelves. Equipped with magnets, which makes it easy to attach to metal shelves. 12V, 9,6W/meter. 4200K. IP43 classified. Life span 50 000 hours. Also available in 900 mm.

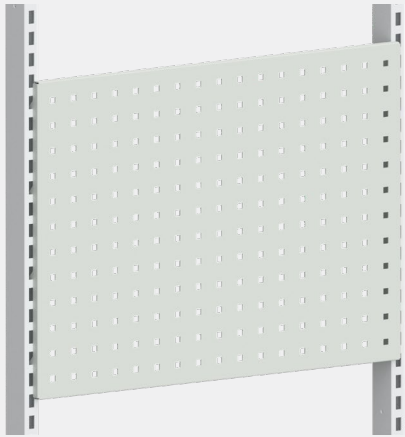


OVER THE TABLE



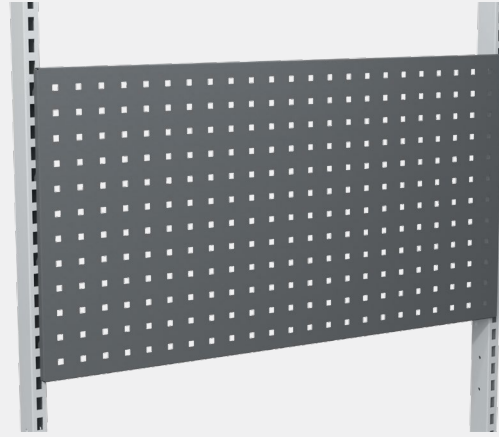
Perforated panels

With our perforated panels you can hang your tools easily, while still having everything within reach. All panels are powder coated and made of 1,5 mm sheet steel.



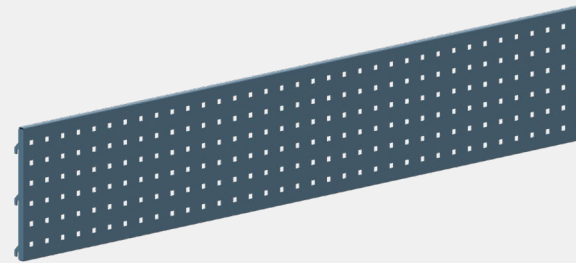
3-520-135

Perforated tool panel 670 mm. Hole dimension 9x9 mm and hole distance c/c 38 mm. Also available in 900 mm.



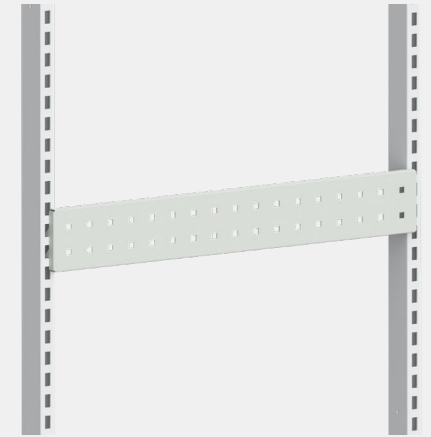
3-521-36

Perforated tool panel 900 mm. Hole dimension 9x9 mm and hole distance c/c 38 mm. Also available in 670 mm.



9-2029-1400-129

Perforated tool panel 1400 mm. Hole dimension 9x9 mm and hole distance c/c 38 mm. Also available in 1600 and 1800 mm.



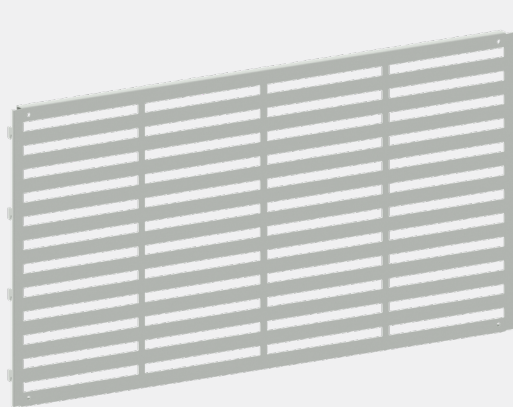
3-522-135

Perforated suspension beam 670 mm. Hole distance c/c 38 mm. Also available in 900 mm.



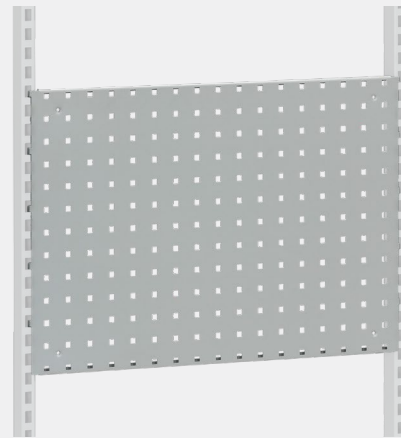
Perforated panels

With our perforated panels you can hang your tools easily, while still having everything within reach. All panels are powder coated and made of 1,5 mm sheet steel.



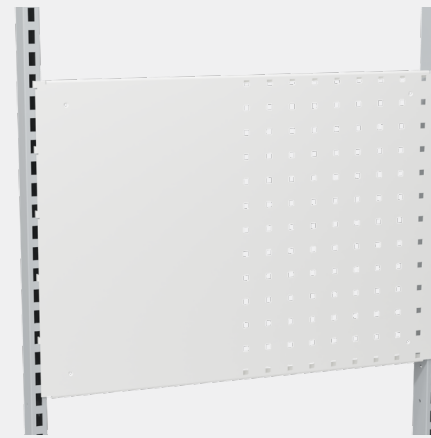
3-369-135

Perforated back panel 900 mm for upright mounting at the workplace. The panel has 48 slotted holes for our standard plastic bins.



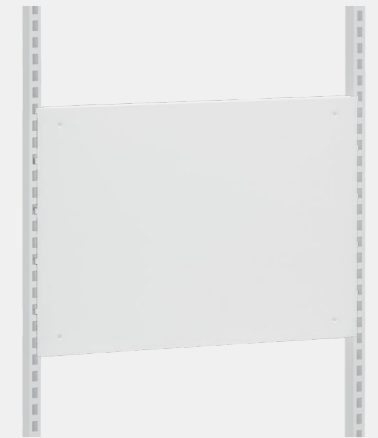
3-359-3

Perforated panel 666 mm with integrated suspension fittings for mounting on perforated upright or wall. Tool hooks can be attached in the joints between two wall-mounted sheets.



3-299-4

Whiteboard perforated panel 666 mm. One side painted in whiteboard paint and the other with perforation for tool hanging. Suitable for wall or upright mounting. Also available in 896 mm.



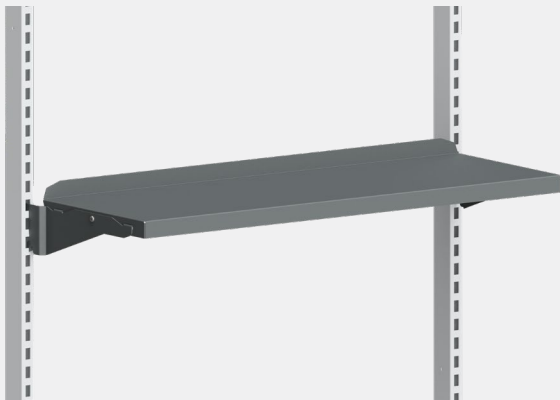
3-298-4

Whiteboard 666 mm. Smooth panel painted in whiteboard color, for wall or upright mounting. Also available in 896 mm.



Shelves

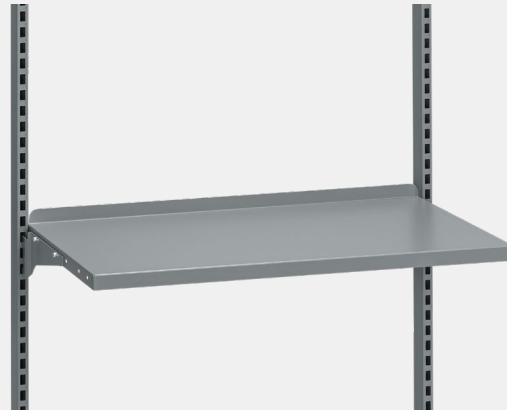
Organize at height with shelves, packing table shelves, and backlists! We have multiple variants in several sizes and colors, all are mounted on perforated uprights in a system.



3-533-36

Shelf with raced edge 900x300 mm.

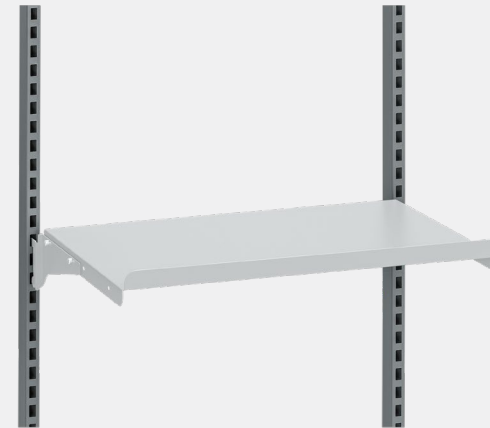
Mounted straight or angled. The shelf is reversible in four ways, with the option of 1 or 3 raced edges and edges front or rear. Also available in 210 mm depth.



3-324-136

Shelf with raced edge 875x450 mm.

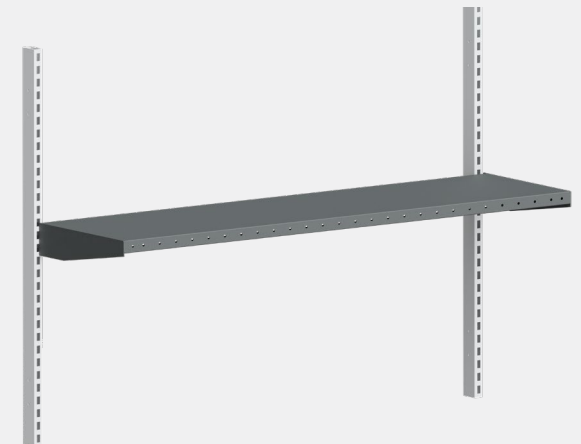
Includes 2 consoles. Mounted straight or angled. The shelf is reversible in four ways, with the option of 1 or 3 raced edges and edges front or rear. Also available in 300 mm depth.



3-326-135

Shelf with raced edge 645x450 mm.

Mounted the other way. Includes 2 consoles. Mounted straight or angled. The shelf is reversible in four ways, with the option of 1 or 3 raced edges and edges front or rear. Also available in 300 mm depth.



3-320-1400-136

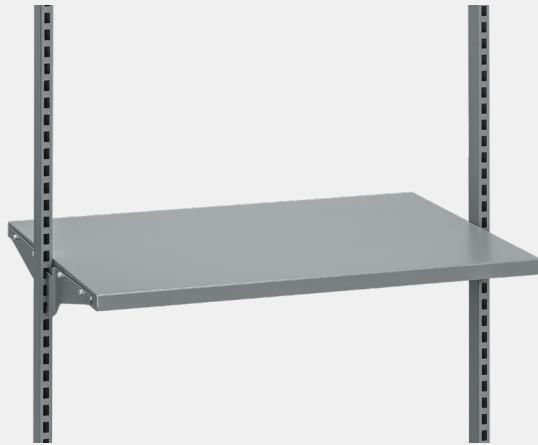
Packing bench shelf 1400x360 mm.

Including consoles. Holes in the front edge for attachment of dividers. Also available in 900x300, 900x360, 1600x300, 1600x360 and 1800x360 mm.



Shelves

Organize at height with shelves, packing table shelves, and backlists! We have multiple variants in several sizes and colors, all are mounted on perforated uprights in a system.



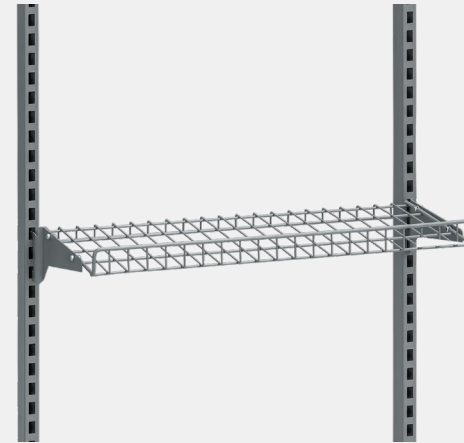
3-325-136

Shelf 875x610 mm. Mounted centered on uprights for deeper storage that does not hang over the table. Also suitable for accessing content from the back. Delivered including consoles.



3-525-135

Suspension rail 900 mm for hanging off plastic bins. Mounted straight or angled.



3-343-136

Wire shelf 670x300 mm. Bent front edge that is fixed with the help of brackets in an angled or horizontal position. Delivered including consoles.



3-293-136

Wire basket 670x175x100 mm. Fixed between perforated uprights.



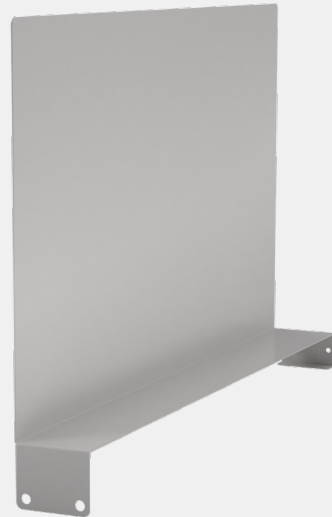
Shelf dividers

Divide and structure your material with shelf dividers.



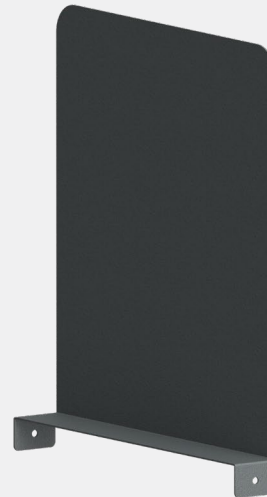
3-551-136

Divider for shelves 300x170 mm.
Also available in 210x140 mm.



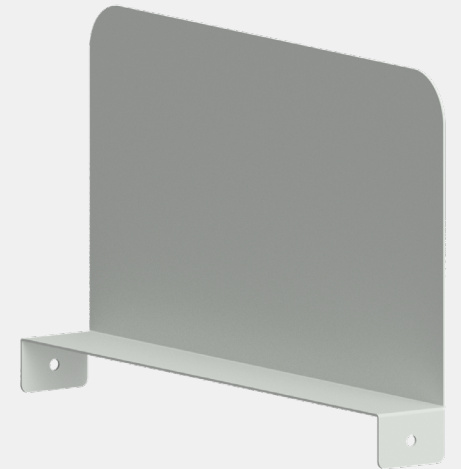
3-319-4058-35

Divider for lower shelf 585x350 mm.
Also available in 585x400 mm.



3-319-3472-136

Shelf divider 400x360 mm. Suitable for top shelf on, for example, packing table. Also available in 400x300, 200x300 and 200x360 mm.



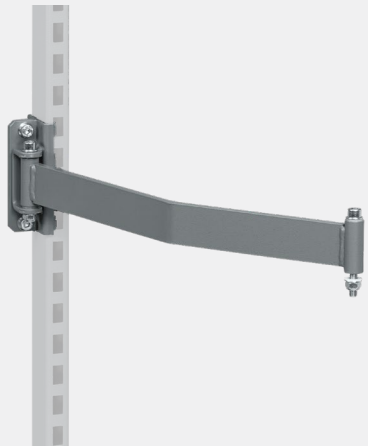
3-319-3272-35

Shelf divider 200x360 mm. Suitable for top shelf on, for example, packing table. Also available in 400x300, 400x360 and 200x300 mm.



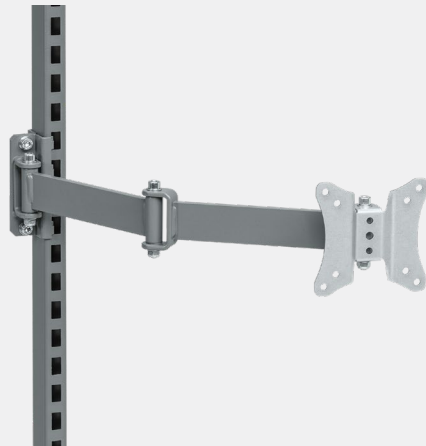
Flexible arms

Do you need to increase the flexibility and improve your ergonomic position by the workstation? Then, we recommend the use of flexible arms! Here is a selection of our range.



3-400-136

Flexible arm for hanging accessories.
The arm is attached to uprights at any height with the included fittings.



3-470-136

Display holder including flexible arm.
The mounting plate allows the screen to be easily placed anywhere within the turning radius of the arm. It is also rotatable. Maximum arm length 455 mm.



30-400-10-7

Gas spring monitor arm for screens 17"-32". The arm is perfectly balanced with the help of a gas spring. It is tiltable at 35°, rotatable 90° and has a screen rotation of 180°. Capacity up to 8 kg. Built-in cable management system.



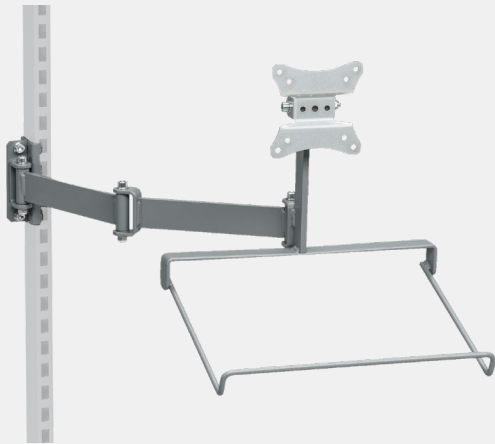
30-473-107

Tablet holder including gas spring arm.
The arm is perfectly balanced with the help of a gas spring. It is tiltable at 35°, rotatable 90° and has a screen rotation of 180°. Capacity up to 8 kg. Built-in cable management system.



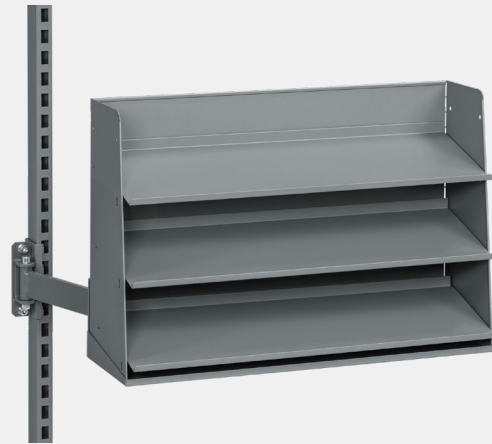
Flexible arms

Complete and combine your flexible arm with different extensions.



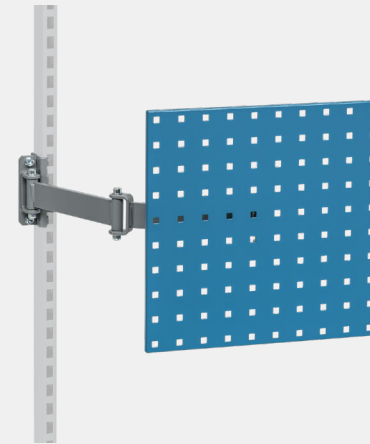
3-489-136

Flatscreen attachment including keyboard holder and flexible arm. C/c dimensions 75 or 100 mm. The screen can easily be placed anywhere within the turning radius of the arm.



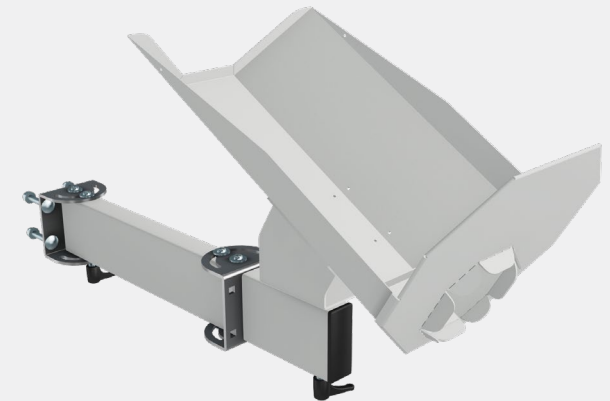
3-487-136

Cassette rack for plastic bins including flexible arm and extension. Space for 15 plastic bins. Maximum arm length 455 mm.



3-484-129

Perforated panel including flexible arm. Used to easily hang and reach tools around the workplace. Maximum arm length 455 mm.



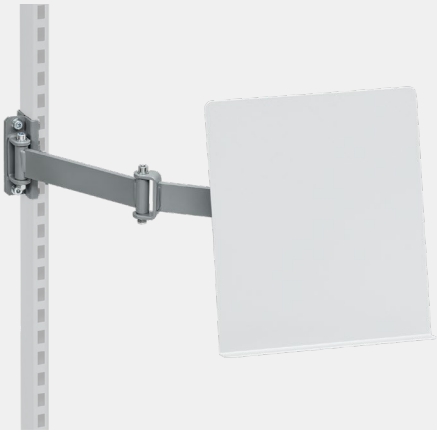
9-17629-10-35

Dispenser mounted on a strong pipe construction to withstand heavy loads. Fully movable in sideways and depth. Mounted on double uprights. Maximum diameter of paper roll is 300 mm.



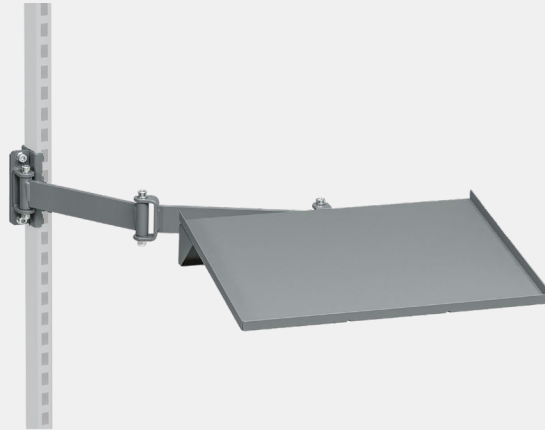
Flexible arms

Complete and combine your flexible arm with different extensions.



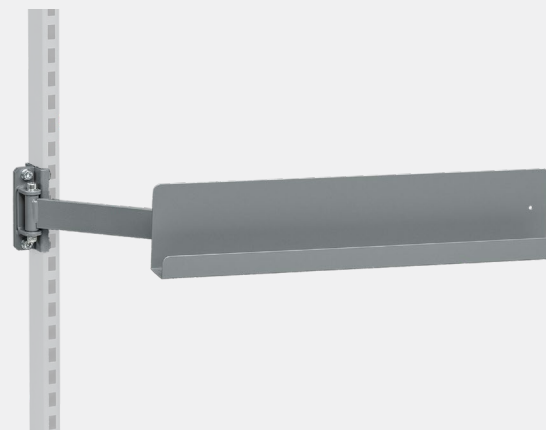
3-485-136

Document holder including flexible arm. Provides a smooth overview of documents needed around the workplace. Adapted for A4. Maximum arm length 455 mm.



3-478-136

Laptop shelf including flexible arm. The shelf has a 10 ° angle. It is also possible to hang plastic boxes on the front edge of the shelf. Maximum arm length 455 mm.



3-483-136

Plastic bin rail including flexible arm. Space for 8 plastic bins ARCA 9076. Maximum arm length 455 mm.



30-411-107

Client holder on gas spring arm. Complete package with client holder adjustable in depth. Attached to perforated uprights with bracket. The gas spring arm is tiltable at 35 °, rotatable 90 °, screen rotation 180 °.

Under the table



Drawer units

Create storage space under the table with a drawer unit! In our range you will find different types with varying load capacity and number of boxes. All have ball bearing expansions with 100% pull-out.



4-583-136

Drawer unit LD with 3 drawers.

Central locking of the chassis which locks all drawers. Maximum load is 25 kg distributed weight. Mounted directly in the worktop.



4-580-136

Drawer unit LD with 1 drawer.

Central locking of the chassis which locks the drawer. Maximum load is 25 kg distributed weight. Mounted directly in the worktop.



4-460-301

Workshop drawer unit 600 HD with 2 drawers.

Central locking in the frame that locks all drawers. Maximum load is 45 kg distributed weight. Mounted directly in the worktop.



4-024-36

Drawer unit premium is made of a strong sheet metal construction. Maximum load 75 kg per drawer. Can be mounted under the table and replace a stand or used freestanding with wheels, plinth, lifting trolley plinth or directly on the floor.



UNDER THE TABLE



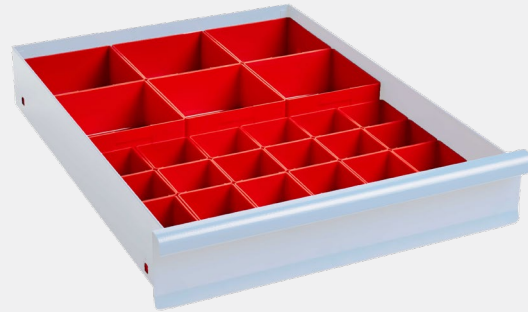
Interior for drawer units

We have drawer interiors in lots of combinations and sizes for all storage needs.



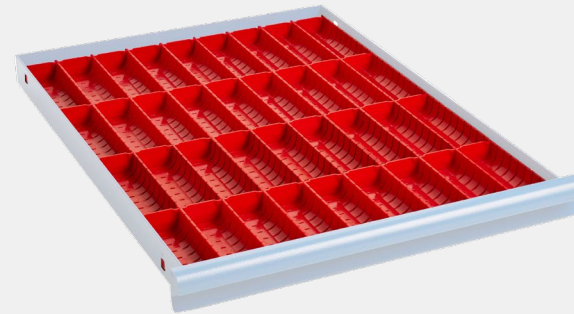
4-585-0

Drawer interior for drawer units.
Consists of 7 slotted sheet metal profiles. Available in several different combinations and sizes.



3-485-0

Drawer interior for workshop drawers.
Fits drawers with inner dimensions 600x450x100 mm. Available in several different combinations and sizes.



3-879-0

Drawer interior for workshop drawers.
Fits drawers with inner dimensions 600x450x50 mm. Available in several different combinations and sizes.



3-379-0

Plastic drawer insert in red ABS plastic. Hooked into each other and can also be equipped with dividers.



Storage

Make use of the space under the table with lower shelves. These fit our motorized workbenches and are best complemented with suspension brackets and wire dividers.



9-21013-24-136

Lower shelf for motorized tables, perfect for printers and storage of packaging. Adjustable in both height and sideways. Maximum load is 25 kg distributed weight.



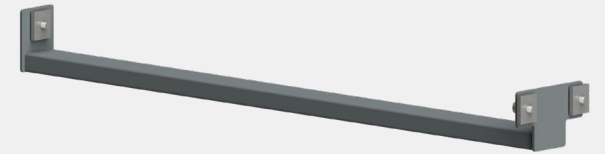
9-21013-23-136

Lower shelf for motorized tables, perfect for printers and storage of packaging. Adjustable in both height and sideways. Maximum load is 25 kg distributed weight.



9-21013-26-133

Wire divider for lower shelf for motorized workbenches.



9-21013-41-136

Suspension for lower shelf made in laser cut tube for extra stability. Needed when mounting lower shelf on table W250. Mounted with attached screw and square nut. Delivered as a pair.



H-frame legs

A selection of our leg stands for workbenches. Most are available in several variants and sizes.



1-106-136

H-Frame legs LD 300. Manually adjustable in steel for workbench LD. Height 700-950 mm, depth 585 mm. Maximum load 300 kg distributed weight.



1-100-136

Heavy duty leg stand for workbench or packing table. Height 700-970 mm excluding worktop. Maximum load 500 kg distributed weight.



1-179-136

Wheel heavy duty leg HD 500 745 mm. Easily locked with the footrest. The wheels are 125 mm in diameter, swivel with TPE track. Maximum load 500 kg distributed weight.



9-17629-11-35

Heavy duty leg. Manually adjustable in steel for workbench. Height 720-920 mm. The leg has three crossbars for lower shelves. Maximum load is 500 kg distributed weight.



Storage and smart accessories



Plastic bins

Mount the plastic bins on a suspension rail or place them on shelves. To sort materials and small parts, it can be smart to use bins in different colors. The bins can be stacked on top of each other while the opening in the front makes the materials visible and easily accessible.



4-616-5



4-616-12



4-616-3



4-616-6



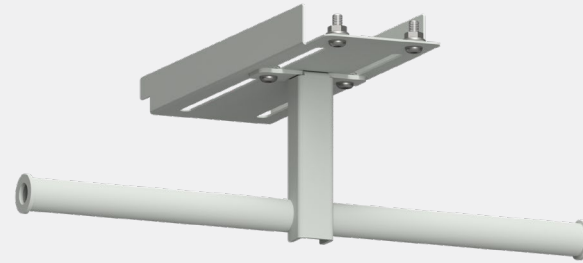
Ergonomic accessories

We have a wide range of ergonomic and smart accessories for the workstation. Innovatively developed so that you can work flexible with the right functions within good reach.



3-399-136

Holder for tape handles. Made of grey lacquered steel. Attached to perforated panel or suspension beam.



9-19052-001-35

Label holder for label rolls with a maximum diameter of 150 mm. Attached easily under the packing table shelf using screw and nut. The holder is adjustable in depth for optimized use. Length of arm 2x170 mm.



9-1601-201-136

Holder for trash bin. Please note that trash bin is not included.



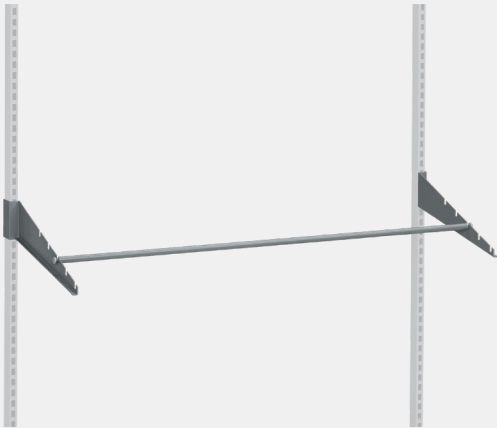
9-1601-202

Grey trash bin which holds 13 liters.



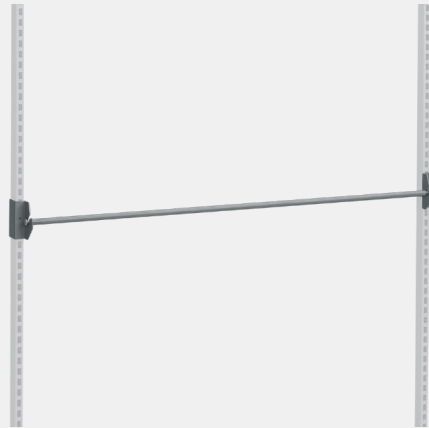
Ergonomic accessories

We have a wide range of ergonomic and smart accessories for the workstation. Innovatively developed so that you can work flexible with the right functions within good reach.



3-780-136

Lower roll holder which facilitates and streamlines packing work. The holder makes it easier to roll out kraft paper, corrugated cardboard, bubble wrap or other packaging material on a roll.



3-781-136

Upper roll holder which facilitates and streamlines packing work. The holder makes it easier to roll out kraft paper, corrugated cardboard, bubble wrap or other packaging material on a roll.



3-367-136

Keyboard shelf with extendable mouse pad. Mounted under the worktop.



3-778-136

Paper tray with 5 compartments. Attached to shelves with magnet or mounted under worktop with screw. Comes with both magnet and screw.



Ergonomic accessories

We have a wide range of ergonomic and smart accessories for the workstation. Innovatively developed so that you can work flexible with the right functions within good reach.



3-332-136

Paper roll holder for perforated uprights. Maximum width of paper roll is 250 mm. Maximum radius 145 mm.



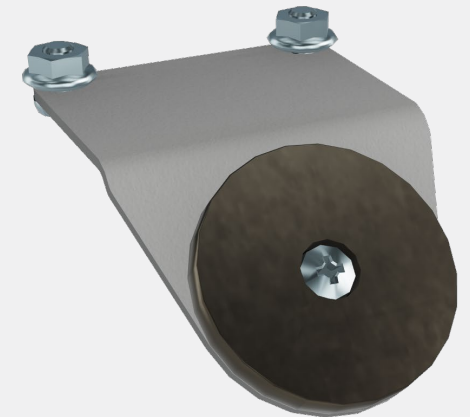
9-21001-10-136

Storage cabinet that is equipped with a removable shelf. Perfect to place on a shelf or inside a workshop cabinet. Can also be screwed directly to the wall.



3-333-136

Binder holder for perforated uprights.



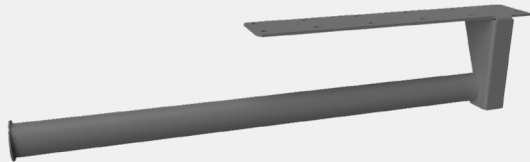
9-17486-92-35

Scanner holder with magnet. Mounted under the packing table shelf with associated screw and nut.



Ergonomic accessories

We have a wide range of ergonomic and smart accessories for the workstation. Innovatively developed so that you can work flexible with the right functions within good reach.



9-17424-60-136

Label holder. Mounted under the worktop with a wood screw. Space for 100 mm label rolls. Pipe dimension 30 mm.



3-776-136

Paper holder for perforated uprights.



3-930-136

Sliding knife unit equipped with a rotating cutting tool in hardened steel. The cutting unit is suitable for corrugated cardboard, kraft paper, bubble wrap, foam etc. Cutting width 1200 mm, knife diameter 90 mm.



9-2020-10-135

Bottle holder with magnetic suspension. Hole diameters 82 mm.



WFI

Curious about the entire range?

In this guide, we have highlighted a selection and made an overview of our accessories that you can complement and combine your workbench with. All accessories in several variants, colors, and sizes can be found on our website – click on the link below to get it all!

[See all our accessories here!](#)



WFI

Build your own table in The Yelper!

In our configurator, The Yelper, you can build a unique workplace solution directly online. Start by choosing a table based on this guide and then, add accessories which makes your workflow more efficient. Everything in a 3D view with drag and drop function, price information, and the ability to send a quotation request. Existing customers also see their specific prices in The Yelper when logged in.

Try it out: <https://configurator.wfi.se/#/?lang=en>

Questions on that?

info@wfiab.se

